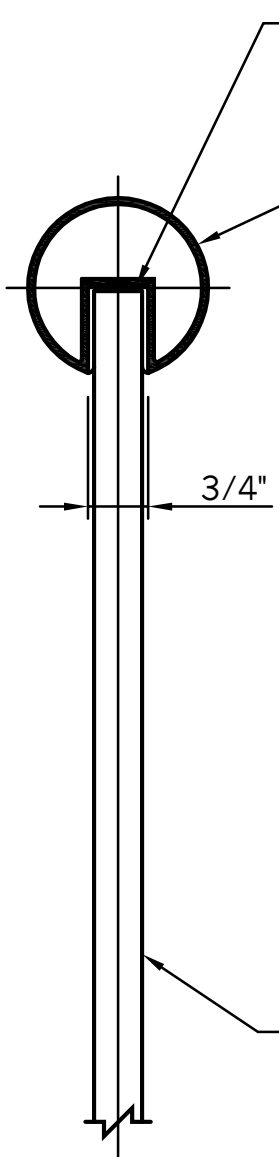


GLASS BASE SECTION



1/8" X 2" X 4" NEOPRENE SPACER
 (2 PER STRAIGHT PANEL 3 PER CURVED PANEL)
 CLEAR SILICONE (CONT.) BOTH SIDES

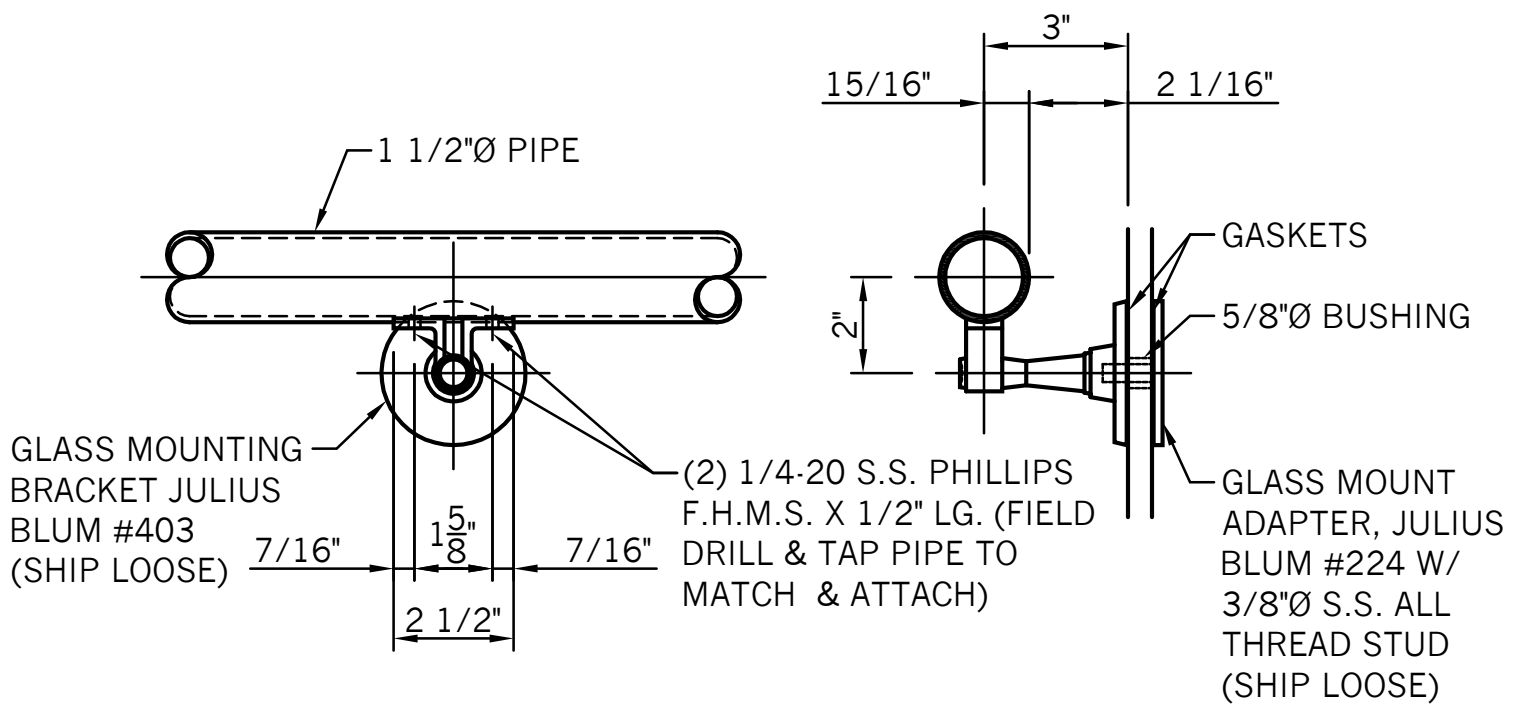
AVAILABLE CAPS (SILICONE IN PLACE)		AVAILABLE FINISHES
ALUMINUM	1.9" O.D. (.109" WALL)	ALL ALUMINUM ASSOCIATION FINISHES ARE AVAILABLE. ALSO CUSTOM TABCOLOR FINISHES ARE AVAILABLE & RECOMMENDED.
	2.375" O.D. (.125" WALL)	
	2.5" O.D. (.125" WALL)	
	3.5" O.D. (.125" WALL)	
BRASS	2.0" O.D. (.125" WALL)	#4 SATIN (180 GRIT) #8 POLISHED STATURARY
	2.5" O.D. (.125" WALL)	
	3.0" O.D. (.125" WALL)	
	3.5" O.D. (.187" WALL)	
STAINLESS STEEL	2.0" O.D. (.125" WALL)	#4 SATIN (180 GRIT) #8 POLISHED

1/2" TEMPERED GLASS
 FINISH OR PATTERN MAY VARY

NOTE:

STOCK MATERIALS ARE SHOWN, CUSTOM SHAPES ARE AVAILABLE UPON REQUEST.

GLASS CAP SECTION



GLASS RAIL H/O BRACKET